



3 WHITESHORE | PELICAN RIDGE

5 Bedrooms | 6 Baths | 5,204 +/- square feet | 11,200 +/- square foot lot

Gorgeous ocean, harbor, Catalina Island and sunset views abound from this beautifully-remodeled, front-row transitional residence in renown Pelican Ridge. Offering over 5,200 square feet, the eminently livable plan features 5 bedroom suites and open social spaces that seamlessly transition with the entertainer's rear yard. Modern design influences are seen throughout the stunning property, including an array of imported marble selections, geometric wall coverings and contemporary light fixtures. Outdoors, a covered loggia, brilliantly-designed negative-edge pool with surrounding wood deck, built-in BBQ and sprawling lawn present the perfect venue from which to enjoy the incredible vistas of sea and sky. Additional highlights include a custom sound system inside and out, central vacuum, numerous decks, and a 3-car finished garage. Residents of Pelican Ridge enjoy world-class amenities, including 24/7 guard-gated & patrolled security, tennis, swim, & fitness facilities of the Newport Coast Community Center & close proximity to World Class shopping, dining, beaches and John Wayne Airport.

5 房 | 6 浴 | 5,204 尺 | 占地 11,200 尺

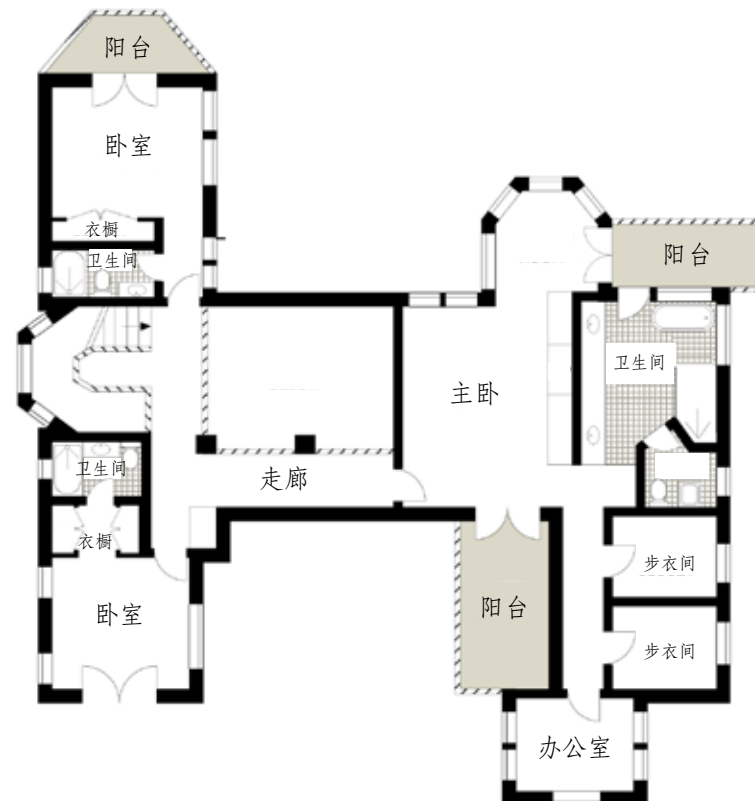
这个位于海景第一线、全新装修的美丽住宅位于著名的鹈鹕岭，被华丽的海洋、港口、卡塔利娜岛和日落美景环绕着。占地超过5,200平方英尺，这个特别宜居的房子有着五间套房，开放的社交空间无缝连接到后院。整个房产您都可以看到现代设计的精神与风格，包括进口大理石阵列式的排法，几何墙，和当代灯具。户外空间有一个遮盖的凉廊，精心设计的负边游泳池，周围的木制甲板，内置的烧烤台和广阔的草坪，是一个让您享受海天美景的完美之所在。其他特点包括内外自定义音响系统，中央吸尘器，多层甲板和一個裝修好的三車位車庫。鹈鹕岭的居民享受世界一流的设施，包括新港社区中心全天候的守卫门控和巡逻保全，网球、游泳和健身设施，亦临近世界级购物区、餐饮区、海滩和约翰·韦恩机场。

JOHN CAIN | 714.655.8940 | JOHN@CAINGROUP.COM

HOM Sotheby's International Realty is independently owned and operated. CalBRE 01467294



一层



二楼

3 WHITESHORE, NEWPORT COAST

For demonstrative purposes only. Dimensions are approximate. All information contained herein is gathered from sources we believe to be reliable. However, we cannot guarantee its accuracy and interested persons should rely on their own inquiries.